

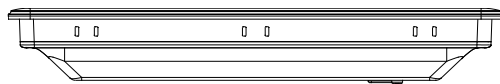


## HMI with 12.1" XVGA TFT Display

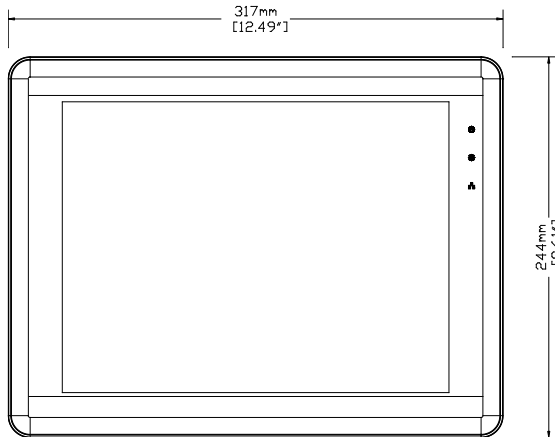
### Features

- Aluminum Housing and Brand-new Color & Design
- Video Input Ports Support NTSC and PAL
- 12.1" 1024x768 TFT Industrial Grade LCD
- Fan-less Cooling System
- Built- in 256MB Flash Memory and RTC
- NEMA4/IP66 Compliant Front Panel
- Long Life LED Back Light with Ceramics Package
- SD Card Slot Supports SD/SDHC Cards
- Power Isolator Inside
- Com1 or Com3 RS485 2W Supports MPI 187.5K
- CAN bus Device Supports CANopen Protocol
- Com1 / Com3 RS485 & CAN bus Built-in Isolation

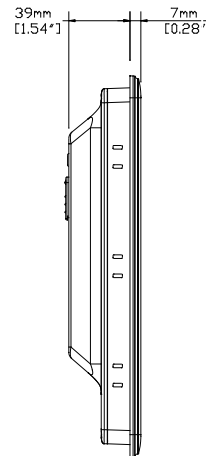
<b>Display</b>	Display	12.1" TFT
	Resolution	1024 x 768
	Brightness (cd/m <sup>2</sup> )	500
	Contrast Ratio	700:1
	Backlight Type	LED
	Backlight Life Time	50,000 hr.
	Colors	16.2M
<b>Touch Panel</b>	Type	4-wire Resistive Type
	Accuracy	Active Area Length(X)±2%, Width(Y)±2%
<b>Memory</b>	Storage(MB)	256
	RAM (MB)	256
<b>Processor</b>		32Bit RISC CPU 800MHz
<b>I/O Port</b>	SD Card Slot	SD/SDHC
	USB Host	USB 2.0 x 1
	USB Client	USB 2.0 x 1
	Ethernet	10/100 Base-T
	COM Port	COM1 (RS-232/RS-485 2W/4W), COM3(RS-232/RS-485 2W),CAN bus
	Audio	Audio Line Out - 3.5 mm jack x 1
	Video Input Port	NTSC/PAL RCA x 2
<b>RTC</b>		Yes
<b>Power</b>	Input Power	24±20%VDC
	Power Consumption	850m A@24V
	Power Isolation	Built In
	Voltage Resistance	500VAC (1 min)
	Isolation Resistance	Exceed 50MΩ at 500VDC
	Vibration Endurance	10 to 25Hz(X,Y,Z direction 2G 30 minutes)
<b>Specification</b>	Enclosure	Aluminum
	Dimensions WxHxD	317 x 244 x 46mm
	Panel Cutout (mm)	305 x 231
	Weight (kg)	Approx. 2.1 kg
<b>Operation</b>	Protection Structure	IP66 front panel (O ring seal)
	Storage Temperature	-20° ~ 70°C (-4° ~ 158°F)
	Operating Temperature	0° ~ 50°C (32° ~ 122°F)
	Operating Humidity	10% ~ 90% RH (non-condensing)
<b>CE/FCC</b>		EN 55022: 2006+A1: 2007, Class A EN 61000-3-2: 2006 EN 61000-3-3: 2008 EN 55024: 1998+A1: 2001+A2: 2003
<b>Software</b>		EasyBuilder Pro



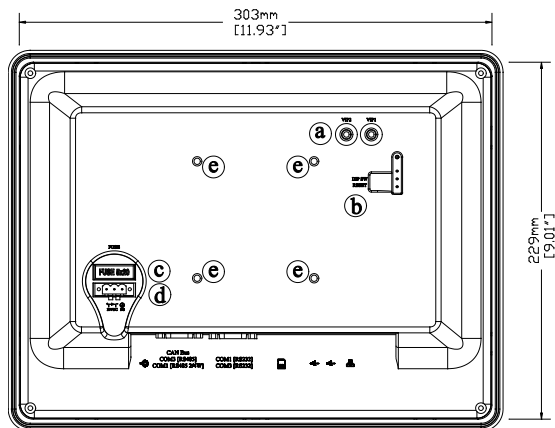
**Top View**



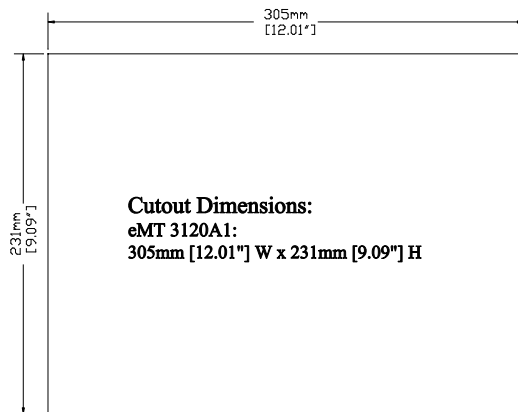
**Front View**



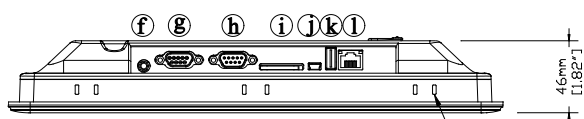
**Side View**



**Rear View**



**Cutout Dimensions:**  
**eMT 3120A1:**  
**305mm [12.01"] W x 231mm [9.09"] H**



**Bottom View**

Panel-mounting clamp slots, 12 places

## Ordering Information

- **eMT3120A**  
 12.1" TFT LCD HMI,  
 256MB flash memory/  
 256MB RAM on board,  
 Video Input Port RCA x 2
- **FLZ485000**  
 Multi-Connector cable  
 Com1[485]/Com3[485]/CAN  
 Bus
- **FLZ232000**  
 Multi-Connector cable  
 Com1[232]/Com3[232]

<b>a</b>	<b>Video Input Port x 2</b>	<b>g</b>	<b>Com1 RS485, Com3 RS485, CAN bus</b>
<b>b</b>	<b>DIP SW &amp; Reset Button</b>	<b>h</b>	<b>Com1 RS232, Com3 RS232</b>
<b>c</b>	<b>Fuse</b>	<b>i</b>	<b>SD CARD SLOT</b>
<b>d</b>	<b>Power Connector</b>	<b>j</b>	<b>USB Client port</b>
<b>e</b>	<b>VESA 75mm Screw Holes</b>	<b>k</b>	<b>USB Host port</b>
<b>f</b>	<b>Line Out</b>	<b>l</b>	<b>Ethernet Port</b>

Contact: **WEINTEK LABS., INC.** TEL: +886-2-22286770 Web: [www.weintek.com](http://www.weintek.com)

eMT3120A1\_DataSheet\_120208